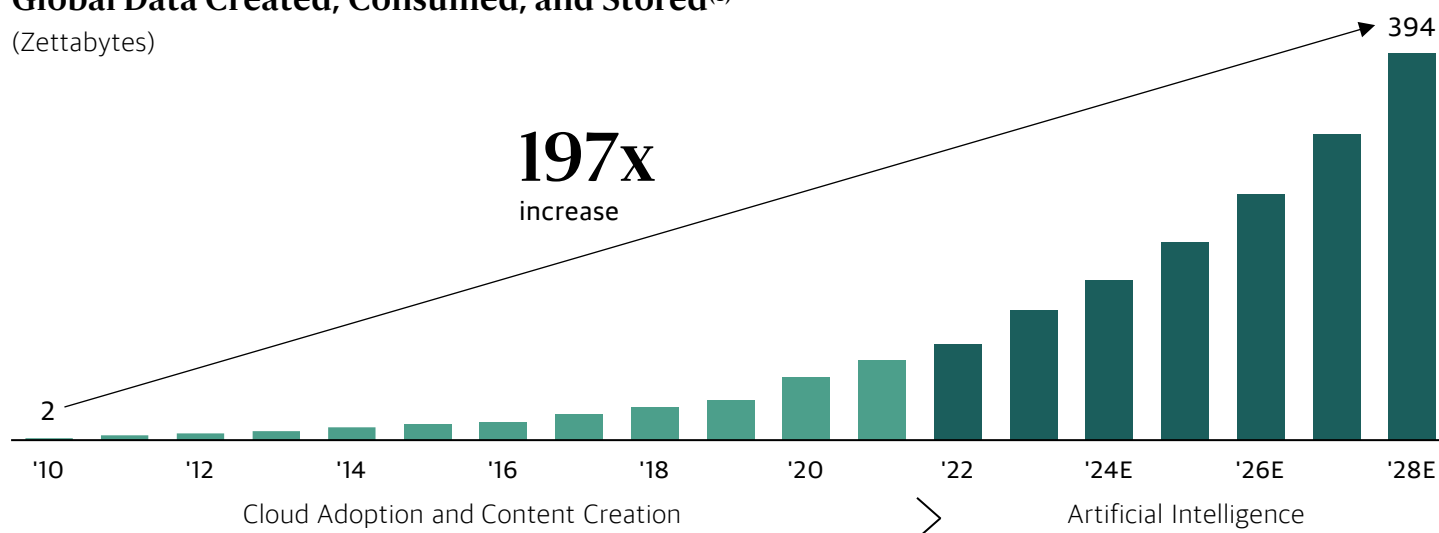


Investing in the Picks and Shovels of AI

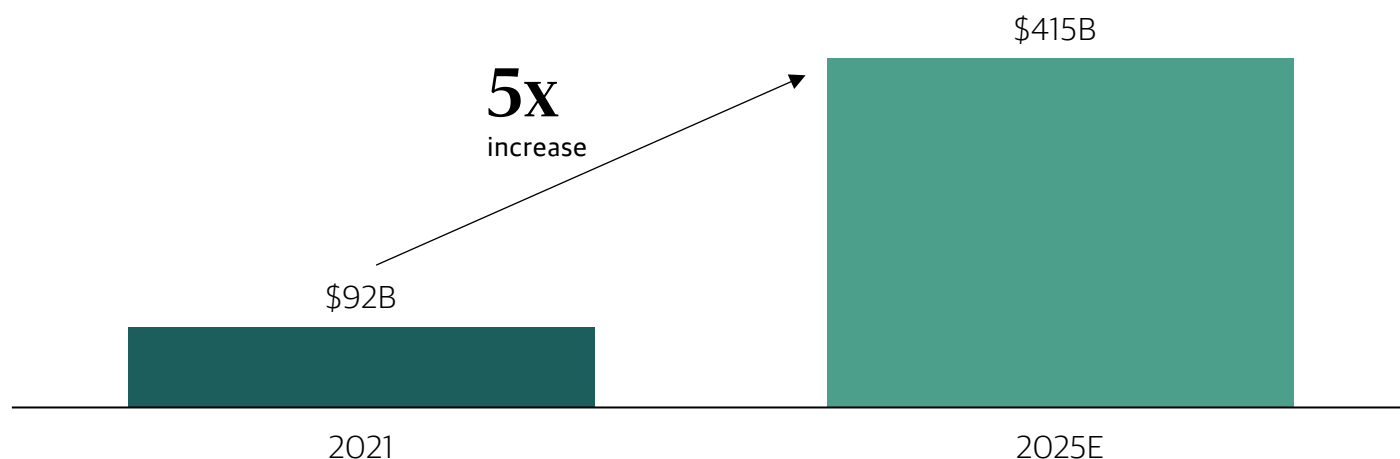
The rapid rise and adoption of artificial intelligence (AI) is creating generational investment opportunities for private market managers to deploy capital into AI's "picks and shovels" - the foundational tools, infrastructure, and technologies that drive AI's development and adoption. With its scale, expertise, and track record of anticipating transformative trends, Blackstone is uniquely positioned to capitalize on this opportunity.

Global Data Created, Consumed, and Stored⁽¹⁾

(Zettabytes)



Hyperscalers' Data Center Capital Expenditure⁽²⁾



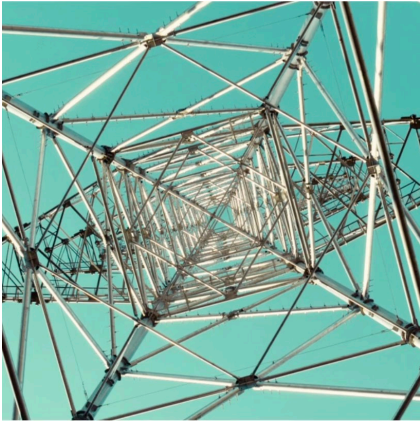
Note: The information herein is provided for educational purposes only and should not be construed as financial or investment advice, nor should any information in this document be relied on when making an investment decision. Opinions expressed reflect the current opinions of Blackstone as of the date hereof and are based on Blackstone's opinions of the current market environments and trends do not imply, predict or guarantee, and are not necessarily indicative of, future events or results. Private market investments are expected to face risks different than those faced by public market investments, including significantly less liquidity, as private market investments generally do not have liquid markets and greater risk of default and related risk of loss of principal. Additionally, investments in private markets are speculative and often include a higher degree of risk. Future market and economic conditions and actual results may vary materially from the information and data provided herein. Diversification is not a guarantee of either a return or protection against loss in declining markets. There can be no assurance that any of the trends described herein will continue in the future or will not reverse. See "Important Disclosure Information," including, "Opinions" and "Trends."

(1) International Data Corporation (IDC), as of May 2024. 2024-2028 represents year-end estimate.

(2) Reflects Microsoft, Amazon, Google, Meta and Oracle. Morgan Stanley Equity Research and publicly reported figures as of Q3'25. Includes finance lease liabilities from Stargate volume.

Powering the Building Blocks of AI

AI relies on three essential components—power, data, and computing power—to create advanced, scalable computational infrastructure.

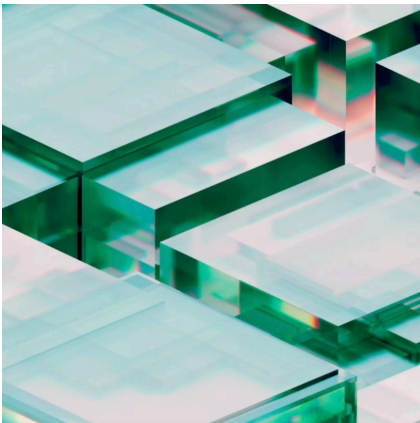


Power

- AI's energy demands are immense, with applications like generative AI requiring significantly more electricity than traditional computing tasks
- Meeting these energy needs will require substantial investment in renewable energy, transmission infrastructure, and utility upgrades

+40%

estimated growth in electricity demand over the next 10 years⁽¹⁾

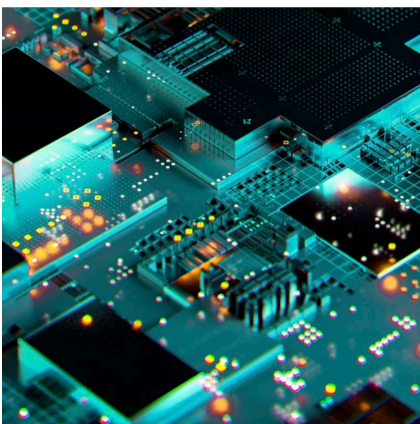


Data

- High-quality data powers AI by providing the raw material for training models to recognize patterns and generate insights
- Data centers serve as the backbone for AI, enabling storage, processing, and transmission of the data that powers AI models

\$2T

estimated to be invested by hyperscalers in data infrastructure over the next five years⁽²⁾



Computing Power

- Advanced computational infrastructure, such as chips and GPUs, is required to process vast amounts of data and execute complex algorithms
- The cost of AI compute has dropped by 99% since 2023⁽³⁾—making these systems more accessible and driving exponential growth in AI applications

1B

ChatGPT monthly active users⁽³⁾

Note: The above information is provided for illustrative purposes only and should not be considered research or investment advice. Represents Blackstone's view of the current market environment as of the date appearing in this material only.

(1) EIA, as of November 2024 and NREL as of August 2022. Reflects total net electricity generation. Figures for 2024 and beyond reflect estimates.

(2) Dell'Oro estimates, January 2025.

(3) OpenAI Company management as of August 2025.

Blackstone: Where Scale Meets Opportunity

Private markets offer unique opportunities to invest in the foundational building blocks of innovation, providing direct access to a diverse range of specialized companies and investment structures. Private market managers can focus on long-term value creation, mitigate risks through broader sector exposure, and reduce reliance on concentrated technology stocks.

At Blackstone, we are uniquely positioned to identify and capture generational opportunities like AI, leveraging the expertise of our people, decades of experience, and the scale of our capital. We believe the next decade can deliver significant value to investors who recognize this potential.

Our track record speaks for itself – by recognizing early on that the explosion of cloud computing, streaming, and AI would drive unprecedented data creation, we positioned ourselves to meet that demand – becoming the world's largest provider of data centers.⁽¹⁾ This unique position gives us proprietary insights into the entire value chain.

Blackstone is the Largest Data Center Provider in the World⁽¹⁾

\$110B

Value of Blackstone's global data center portfolio⁽²⁾



100%

pre-leased developments

2021

year of acquisition

15-20 yrs

average lease term

+12x

growth in leased capacity under our ownership⁽³⁾



Note: The above information is provided for illustrative purposes only and should not be considered research or investment advice. Represents Blackstone's view of the current market environment as of the date appearing in this material only.

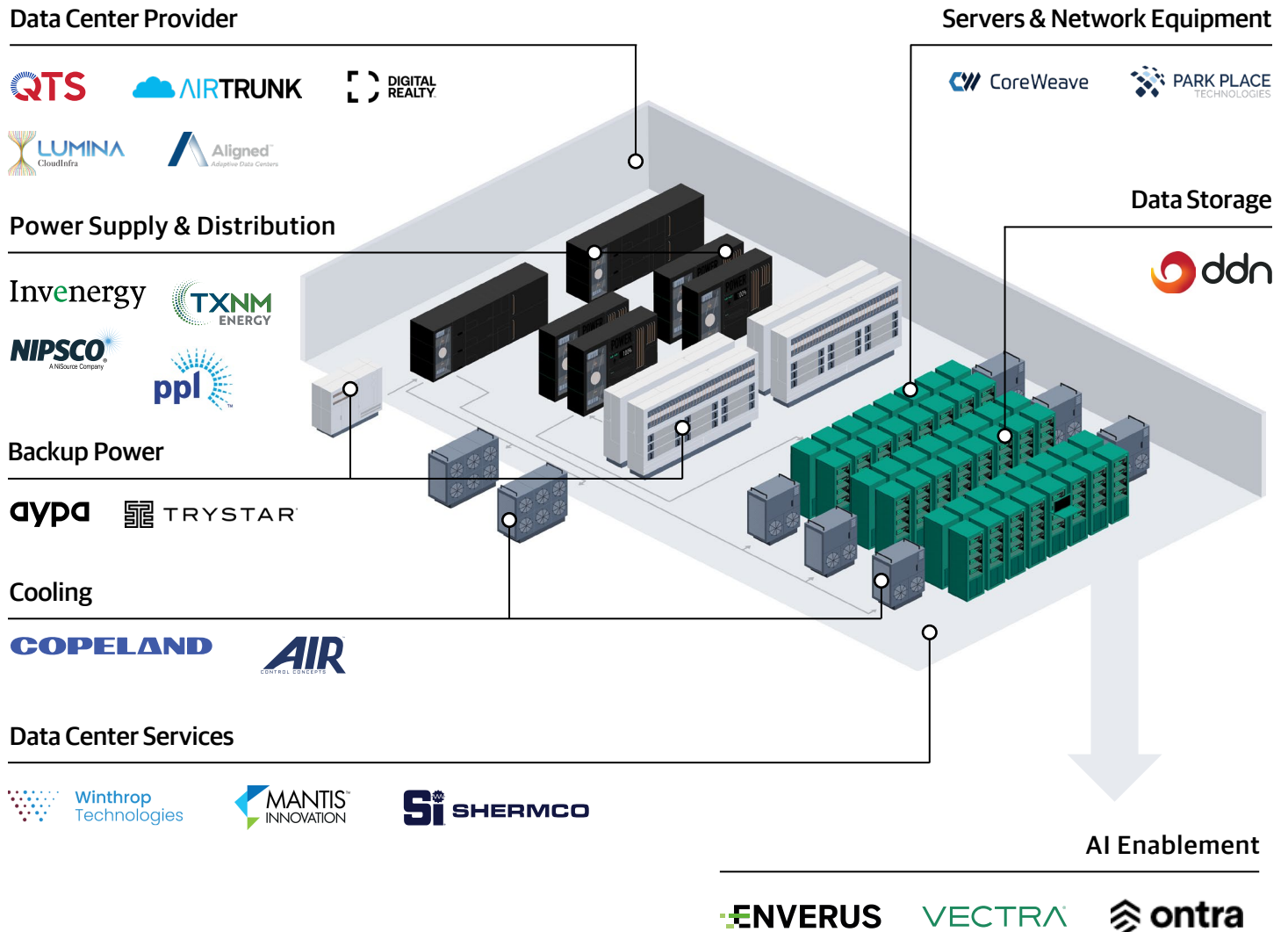
(1) Blackstone Proprietary Data and datacenterHawk, based on leased megawatts, as of September 30, 2025.

(2) As of June 2025. Includes operating and development assets with contractual leases.

(3) Based on leased megawatts at acquisition vs. September 30, 2025.

Investing Across the AI Value Chain

Blackstone invests at scale in the critical enablers of AI – such as data centers, hardware, and electricity – what we call the “picks and shovels” of the AI revolution. These investments provide a compelling entry point into one of our highest-conviction themes while potentially offering broader diversification⁽¹⁾ across the AI and digital infrastructure ecosystem, beyond what is typically available in public markets.



The explosive growth of AI is accelerating power demand, highlighting another high-conviction megatrend. This shift presents a transformative investment opportunity as the energy infrastructure evolves to meet the needs of these advanced technologies.

Note: The above information is provided for illustrative purposes only and should not be considered research or investment advice. Represents Blackstone's view of the current market environment as of the date appearing in this material only.
(1) Diversification does not ensure profits or protect against losses.

Important Disclosure Information

This document (together with any related materials or links, the "Materials") does not constitute an offer to sell, or a solicitation of an offer to buy, any security or instrument, or a solicitation of interest in any Blackstone vehicle, account or strategy. If any such offer is made, it will only be by means of an offering memorandum or prospectus, which would contain material information including certain risks of investing including, but not limited to, loss of all or a significant portion of the investment due to leveraging, short-selling, or other speculative practices, lack of liquidity and volatility of returns. Nothing herein constitutes investment advice or recommendations and should not be relied upon as a basis for making an investment decision.

This material is not to be reproduced or distributed to any other persons (other than professional advisors of the persons receiving this material) and is intended solely for the use of the persons to whom it has been delivered.

Past performance does not predict future returns.

This material is provided is for informational and educational purposes only and is not an advertisement for purposes of the U.S. Investment Advisers Act of 1940.

Alternative investments often are speculative, typically have higher fees than traditional investments, often include a high degree of risk and are appropriate only for eligible, long-term investors who are willing to forgo liquidity and put capital at risk for an indefinite period of time. They may be highly illiquid and can engage in leverage and other speculative practices that may increase volatility and risk of loss.

Blackstone Proprietary Data. Certain information and data provided herein is based on Blackstone proprietary knowledge and data. Portfolio companies may provide proprietary market data to Blackstone, including about local market supply and demand conditions, current market rents and operating expenses, capital expenditures, and valuations for multiple assets. Such proprietary market data is used by Blackstone to evaluate market trends as well as to underwrite potential and existing investments. While Blackstone currently believes that such information is reliable for purposes used herein, it is subject to change, and reflects Blackstone's opinion as to whether the amount, nature and quality of the data is sufficient for the applicable conclusion, and no representations are made as to the accuracy or completeness thereof.

ERISA Fiduciary Disclosure. The foregoing information has not been provided in a fiduciary capacity under ERISA, and it is not intended to be, and should not be considered as, impartial investment advice.

Forward-Looking Statements. Certain information contained in the Materials constitutes "forward-looking statements," which can be identified by the use of forward-looking terminology or the negatives thereof. These may include statements about plans, objectives and expectations with respect to future operations. Such forward-looking statements are inherently uncertain and there are or may be important factors that could cause actual outcomes or results to differ materially from those indicated in such statements. Blackstone believes these factors include, but are not limited to, those described under the section entitled "Risk Factors" in its Annual Report on Form 10-K for the most recent fiscal year, ended December of that year,

and any such updated factors included in its periodic filings with the Securities and Exchange Commission, which are accessible on the SEC's website at www.sec.gov. These factors should not be construed as exhaustive and should be read in conjunction with the other cautionary statements that are included in the Materials and in the filings. Blackstone undertakes no obligation to publicly update or review any forward-looking statement, whether as a result of new information, future developments or otherwise.

Opinions. Opinions expressed reflect the current opinions of Blackstone as of the date appearing in the Materials only and are based on Blackstone's opinions of the current market environment, which is subject to change. Certain information contained in the materials discusses general market activity, industry or sector trends, or other broad-based economic, market or political conditions and should not be construed as research or investment advice. Further, opinions expressed herein may differ from the opinions expressed by a Dealer and/or other businesses / affiliates of a Dealer. This is not a "research report" as defined by FINRA Rule 2241 or a "debt research report" as defined by FINRA Rule 2242 and was not prepared by the Research Departments of a Dealer or its affiliates.

Logos. The logos presented herein were not selected based on performance of the applicable company or sponsor to which they pertain. Logos were selected to illustrate managers and/or portfolio companies that are indicative representations of the thesis, theme or trend discussed on the slide(s) where they appear. In Blackstone's opinion, the logos selected were generally the most applicable examples of the given thesis, theme or trend discussed on the relevant slide(s). All rights to the logos presented herein belong to their respective owners and Blackstone's use hereof does not imply an affiliation with, or endorsement by, the owners of these trademarks and/or logos.

Recent Market Events Risk. Local, regional, or global events such as war (e.g., Russia/Ukraine), acts of terrorism, public health issues like pandemics or epidemics (e.g., COVID-19), recessions, or other economic, political and global macro factors and events could lead to a substantial economic downturn or recession in the US and global economies and have a significant impact on the Fund and its investments. The recovery from such downturns is uncertain and may last for an extended period of time or result in significant volatility, and many of the risks discussed herein associated with an investment in the Fund may be increased.

Third-Party Information. Certain information contained in this material has been obtained from sources outside Blackstone, which in certain cases have not been updated through the date hereof. While such information is believed to be reliable for purposes used herein, no representations are made as to the accuracy or completeness thereof and none of Blackstone, its funds, nor any of their affiliates takes any responsibility for, and has not independently verified, any such information.

Trends. There can be no assurances that any of the trends described herein will continue or will not reverse. Past events and trends do not imply, predict or guarantee, and are not necessarily indicative of, future events or results.